

The background of the entire page is a close-up photograph of several sliced limes. The slices are arranged in an overlapping pattern, showing the bright green segments and the darker green rind. The lighting is bright, highlighting the texture of the fruit.

Bury St Edmunds Festival

17-27 May 2012

Box Office: 01284 758000
www.buryfestival.co.uk



St Edmundsbury
BOROUGH COUNCIL



time to explore

Bringing past memories into the present

New from 3 March 2012
Ickworth Lives - Experience the real stories and memories of former servants in the 1920s and 30s. Discover what life was really like working on a country estate. Explore the nooks and crannies down in the the Servants' basement under the famous Rotunda at Ickworth.

Call 01284 735270
www.nationaltrust.org.uk/ickworth

 **National Trust**
Time well spent

Registered charity No. 205846.

Welcome

Thank you for picking up a copy of the 2012 Bury St Edmunds Festival brochure. We are genuinely excited by the acts we have tempted to Bury St Edmunds this year and hope that you find several events to come and enjoy.

With the countries of the world appearing at the Olympics this summer we have tried to represent that musically with a number of events in this year's Festival, most notably with the enormous community and schools choir that will be coming together for the opening Friday of the Festival. Look out too for guitarist John Williams's world tour and the new work by Sheema Mukherjee composed for the Cultural Olympiad and performed by Imagined Village.

The Festival doesn't just happen by itself and it is made possible only with the generous support of its funders, sponsors and the Festival Friends alongside the time and energy put in by the volunteer stewards and helpers, the staff at the Tourist Information Centre and the Box Office, the St Edmundsbury Parks team, the Blue Badge Guides and the staff at all of the venues. So thank you to all of you for making it happen.

There are lots of other delights to find in the pages in this brochure, so please delve deep and come on some musical adventures with us.

Clr Sara Mildmay-White

Portfolio Holder for Culture and Sport

Nick Wells

Festival Manager

Festival Office

The Apex

1 Charter Square

Bury St Edmunds

Suffolk IP33 3FD



St Edmundsbury
BOROUGH COUNCIL

Thursday 17 May

5.30PM

ABBEYGATE PICTUREHOUSE

Shakespeare in Love

(1997; 15)

Joseph Fiennes stars as William Shakespeare in this romantic comedy set in 1593. While working on a new play called 'Romeo and Ethel, the Pirate's Daughter', he gets writer's block. No magic can bring back his gift until he meets a young woman (Gwyneth Paltrow) who steals his heart, inspires him to write the most famous love story of all time and – in doublet and hose – becomes his 'female' lead.

£8, (£7, £6)



8.00PM APEX

Ballaké Sissoko and Vincent Segal



Ballaké Sissoko is one of Mali's great exponents of the kora and here he joins forces with the French cellist Vincent Segal, who plays for the trip-hop band Bumcello. The CD, *Chamber Music*, that they brought out last year, has been described as one of the most elegant and beautiful recordings of world music in recent years, it was voted

Box Office: 01284 758000

International Jazz Album of the Year in France and described as 'exquisite' in the *Guardian*.

'The West African kora is one of the most beguiling instruments on earth, particularly in the hands of Ballaké Sissoko.'

Evening Standard



Support act **Muntu Valdo** is a Sawa from Cameroon who delivers his unique 'Sawa Blues' solo, with just guitar and harmonica and using live technology to underpin his powerful melodies.

£16, £5 F

www.buryfestival.co.uk

our bury st edmunds

supporting Bury St Edmunds Festival

Are you visiting the Festival this year?

Before your visit make sure you check out the latest news and offers from all the shops, restaurants, bars and businesses in Bury St Edmunds.

Visit www.ourburystedmunds.com

Or download our app from the app store or Android market, search 'our burystedmunds' ...



our bury st edmunds...
Shine of a King, Cradle of the Law

visit www.ourburystedmunds.com

Friday 18 May

1.00PM APEX

Royal Academy Harp Ensemble



A solo harp recital is always wonderful, a duo is rare but today we will be treating you to six harps on stage at once! It is always a pleasure to invite musicians from the Royal Academy of Music to the Festival and I am particularly looking forward to the harp ensemble's return visit to Bury St Edmunds.

David Snell

Prelude, Rock, Blues and Latin

Gareth Wood *Rhapsodie*

for solo cello and harp quartet

(world premiere)

Joby Talbot *Mandala*

Richard Bissill *Sirens*

£7, £5

5.30PM

ABBEYGATE PICTUREHOUSE

Walk the Line

(2005; 12A)

A compelling biopic of the iconic Johnny Cash and a beguiling love story, James Mangold's acclaimed *Walk the Line* recounts the first half of Cash's eventful life: the death of his brother, a first marriage destroyed by drugs and a gruelling touring schedule, and his growing success coupled with self-destructive antics. But it is his fateful meeting with June Carter and his abiding love for her that anchor the film, as they did Cash's life. Featuring Cash's music in abundance, *Walk the Line* is a fitting tribute to a legend.

£9.50 (£8.50, £7.50)



Box Office: 01284 758000

6.30PM ABBEY GARDENS

Around the World with 1,000 Voices



Come and join us (and there will be a lot of us!) in the Abbey Gardens for a trip around the world. Dozens of schools and community groups from West Suffolk will be taking part, along with a small group of very flexible and adventurous musicians as we take a musical journey through the Americas, Africa, Europe, Asia and Australasia.

£5



*A co-promotion with
St Edmundsbury
Theatre Services*



Supported by **Bury Free Press**

7.30PM

UNITARIAN MEETING HOUSE

Bury Songwriting Competition Final

Now in its fifth year, the competition runs from mid-April at the Masons Arms Public House. The final will feature eight musical acts competing to win the prize package from Peacefrog Promotions worth over £1000. Expect to see some of the hottest up-and-coming artists from all over the region. There will be a performance from last year's winner Simon Lucas-Hughes and a very special surprise guest headlining appearance. For details of how to enter the competition go to www.burysongwriterscompetition.co.uk or email peacefrogpromotions@googlemail.com

£6 in advance from the Masons Arms
£7 on the door

www.buryfestival.co.uk

Friday 18 May

8.00PM

CONSTITUTIONAL CLUB

Cloudstreet

Based in Queensland, Australia, Nicole Murray and John Thompson have carved themselves a niche internationally as outstanding performers of acoustic folk music. They come to the Milkmaid Folk Club with vocal harmonies reminiscent of Steeleye Span and the Seekers, powerful arrangements of Australian classics and a repertoire that spans the Anglo-Celtic world. Cloudstreet's exciting performances entertain and delight and they deliver a powerful and moving musical experience, based on entrancing musicality, stunning use of vocal harmony and above all, a compelling sense of fun.

£10, £8

8.30PM APEX

Jazz at the Movies



Many of the songs that we know as jazz standards were originally written for films. Jazz at the Movies is a 5-piece band formed specifically to play some of these songs. You'll be able to enjoy well-known tunes such as 'He's a Tramp', 'My Heart Belongs to Daddy' and 'Speak Low', played by some of the UK's best-known jazz musicians, including Joanna Eden on vocals ('the UK's answer to Diana Krall and Norah Jones' – *Time Out*), Bury St Edmunds's very own Chris Ingham on piano, Mick Hutton (bass), George Double (drums) and Mark Crooks (saxophone).

£12, £5 F

Box Office: 01284 758000

Saturday 19 May

FROM 10.00AM

WESTGATE BREWERY GARDENS

Greene King Real Beer & Food Festival

The hugely successful Real Beer & Food Festival is returning for a third year. Local food and drink producers will be joining Greene King to showcase and promote the region's very best produce.

Among the delights will be venison, beef, cheese, sausages, chutney, ice-cream, fudge, whisky and Greene King's award-winning beers. Experts will be conducting tutored tastings and beer master-classes over the weekend, and there will be opportunities to sample as well as to buy.

New for this year, we will be continuing the music until 10pm (Saturday only) with some great local bands providing the entertainment.

Tickets available from the Greene King Visitor Centre (01284 714297) and the Apex.

£4 (under-16s free)



www.buryfestival.co.uk



11.00AM ABBEY GARDENS

Street Theatre

This is one of my highlights every year. Four hours of fun in the gorgeous Abbey Gardens and its free!

Free Event



Saturday 19 May

FROM 12.30PM

MEET AT THE APEX

Shakespeare in the Streets

After two successful years of sell-out *Sonnet Walks*, they're back. Similar idea, different route, all new performances to keep you on your toes . . .

Created especially for the Bury Festival by a host of local professional actors, artists and musicians, it's Shakespeare – and Bury – as you've never seen it before! Setting off in small groups every 15 minutes, you will walk a guided route exploring some of the hidden (and not so hidden) secrets of our town's past and present. You'll encounter performers along the way and you'll never know what to expect.



Here's what past audiences had to say:

'Brilliant fun, unexpected and full of surprises.'

'Such a delightful idea – bringing Shakespeare's Sonnets into our world. Bury is so well suited to this.'

£8, £5 F



*Presented in association
with Bury St Edmunds
Theatre Royal*

5.00PM

ST EDMUNDSBURY CATHEDRAL

Organ Recital: Colin Walsh

Colin Walsh is Organist Laureate at Lincoln Cathedral and has been described as one of the finest Cathedral organists in Europe. The programme will include works by Bach, Dupré and Franck.

Free (with retiring collection)

Box Office: 01284 758000

5.30PM
ABBEYGATE PICTUREHOUSE

Girl with a Pearl Earring

(2003; 12A)



Based on Tracy Chevalier's best-selling novel, *Girl with a Pearl Earring* tells the imagined, intriguing story behind one of Vermeer's best-loved paintings. In 17th-century Flanders, Griet is forced by circumstance to become a servant in the artist's household. Fascinated by his work, she is soon drawn into his world of colour and light. But the growing closeness between master and servant cannot go unnoticed, and becomes a threat to the ordered household and to Griet's own respectability.

£9.50 (£8.50, £7.50)

7.30PM ST MARY'S CHURCH

Grimethorpe Colliery Band

The real stars of the hit movie *Brassed Off*, the Grimethorpe Colliery Band is in constant demand throughout the world. Having won almost every brass band accolade, these musicians have an esteemed international reputation with numerous television appearances and recordings to their credit. Enjoy the fabulous sound of this world-famous brass band who will perform a mix of favourite classics and newer works.

£19, £15, £5 F



Saturday 19 May

7.30PM APEX

Imogen Cooper



Haydn	Sonata in E flat H:XVI/52
Beethoven	Sonata in D minor Op. 31/2 ('Tempest')
Brahms	Theme and Variations from String Sextet, Op. 18
Schumann	<i>Fantasiestücke</i> , Op. 12

'Simply one of the finest pianists this country has produced' is how *Gramophone* magazine described Imogen Cooper earlier this year. In this visit to the Festival she plays one of Haydn's last sonatas, written during his second London visit, followed by a sonata by Haydn's pupil Beethoven which was supposedly inspired by Shakespeare's *The Tempest*; then

Brahms's arrangement of the variation movement of his first Sextet, made especially for Clara Schumann, is followed by Robert Schumann's intensely poetic *Fantasy Pieces*.

£23, £18, £5 F

7.45PM HUNTER CLUB

The Music of Hoagy Carmichael

An evening packed with the songs and stories of one of the most enduring and endearing songwriters America ever produced. This exclusive presentation highlights Hoagy's special relationship with the music of jazz cornettist Bix Biederbecke and features well-known hits such as 'Stardust', 'Georgia On My Mind' and 'Skylark', as well as more obscure nuggets from Hoagy's rich and varied songbook. The Chris Ingham Trio is joined by one of Britain's most expressive and versatile trumpeters Paul Higgs on cornet.

£12

Box Office: 01284 758000

Sunday 20 May

10.00AM NOWTON PARK

Nettle Appreciation Day

Come and join in national 'Be Nice to Nettles' week and learn that nettles might not be that bad after all. You can have a go at making nettle cord, fresh nettle tea and using nettles to dye wool and sample nettle cordial and nettle cheese.

£2 on the door
Suitable for all the family,
no need to book

10.00AM
WESTGATE BREWERY GARDENS

Greene King Real Beer & Food Festival

For details see Saturday, 19 May.
Ends at 5pm.



www.buryfestival.co.uk

10.00AM

ST EDMUNDSBURY CATHEDRAL

Festival Eucharist

This special service, led by the Cathedral Choir, will feature the *Messe solennelle* by Jean Langlais and the motet *Tantum ergo* by de Severac. The address will be given by a visiting preacher. All welcome.

10.30AM

MEET AT THE TOURIST
INFORMATION CENTRE

Nursery Rhyme Walk

Nursery Rhymes, like our town, have an interesting history – not all of it suitable for young children! This walk explores the history of some of our most popular nursery rhymes and links them to features and events that happened in the town.

£8, £5 (includes coffee & a pastry) F

Sunday 20 May

11.00AM ATHENAEUM

Coffee Concert: International Baroque Players



Telemann Concerti in G, C
and D for four
unaccompanied violins

Bach Concerto in D minor
for two violins

Purcell Chacony in G minor

Pachelbel Kanon in D

Valentini Concerto
for four violins

Handel Sonata a 5 in B flat

I first heard this ensemble perform at about 9.30am in the morning and was so impressed by their freshness and vigour at such an unsociable concert hour that I knew I had to book them.

This programme of baroque favourites includes Bach's perennially loved Double Violin Concerto; Telemann's criminally under-performed concerti for solo violins, which showcase all the players in turn, and beautiful works by Handel and Valentini, which complement these perfectly.

£12, £5 (includes interval coffee) F



12.30PM MEET AT THE APEX

Shakespeare in the Streets

For details see Saturday, 19 May.

Box Office: 01284 758000

3.00PM

ABBEYGATE PICTUREHOUSE

The Aviator

(2004; 12A)

Martin Scorsese's sprawling epic about one of the most notorious figures of the American film industry, Howard Hughes, confirms his status as America's greatest living film director. In a film that works both as an intimate and revealing biopic and a detailed look at Hollywood of the 1940s and 1950s, DiCaprio is ideally cast as the man whose reach only just exceeded his grasp. Cate Blanchett offers an uncanny performance as Hughes's close friend and lover, Katharine Hepburn. Winner of Best Supporting Actress, Best Cinematography and Best Editing Oscars 2005.

£9.50 (£8.50, £7.50)



5.00PM

ST EDMUNDSBURY CATHEDRAL

Cathedral Choir



As part of the national celebration of 350 years of the 1662 Book of Common Prayer, St Edmundsbury Cathedral Choir gives a concert using texts taken from it. Works by Gibbons, Byrd, Britten, Stanford and others will be interspersed with readings from the BCP. After the concert there will be a chance to view an exhibition in the new Cathedral Treasury featuring different editions of the Prayer Book.

£8 F

www.buryfestival.co.uk

Sunday 20 May

6.30PM APEX

Pre concert talk: In Conversation with Cheryl Frances-Hoad

Tom Hutchinson of the Royal Philharmonic Society will be in conversation with Cheryl Frances-Hoad about her work as a composer today.

Free event

7.30PM APEX

Britten Sinfonia

The Britten Sinfonia is one of Europe's most dynamic chamber orchestras and has made a number of appearances at the Bury Festival. Tonight's concert by a quintet from the orchestra features oboist Nicholas Daniel, playing a programme that includes Mozart's Oboe Quartet and a beautiful Colin Matthews arrangement of Schumann's song 'Mondnacht' for cor anglais and strings. The focus of this concert is *Memoria* by Cheryl Frances-Hoad, chosen by the

Royal Philharmonic Society and BBC Radio 3 to be part of its *Encore* series of concerts. This concert will be recorded for broadcast on BBC Radio 3.



- Bach Oboe Sonata in E flat
Finzi Prelude and Fugue
for string trio
Britten Phantasy, Op. 2
Cheryl Frances-Hoad
Memoria
Schumann arr. Matthews
Mondnacht
Mozart Oboe Quartet in F

£16, £13, £5 F



Box Office: 01284 758000

Monday 21 May

1.00PM APEX

Bones Apart



Put all your preconceptions of the trombone aside because in the hands of this fantastic, award-winning trombone quartet you will hear the beauty, sensitivity and flexibility of the trombone. Inspired by Shakespeare's plays, this concert will include music by Purcell, Mendelssohn, Duke Ellington and Bernstein.

£7, £5

1.00PM HUNTER CLUB

Andi Hopgood

Rising singing star with a mellow and inventive take on standards and jazz classics.

£6.50

5.30PM

ABBEYGATE PICTUREHOUSE

Prick Up Your Ears

(1987; 18)

Joe Orton, the murdered homosexual playwright and subject of this biopic, famously said that *Prick Up Your Ears* was much too good a title for a film. Alan Bennett disagreed – and managed to create a script that did justice to the wit (and lust) of the infamous author of *Entertaining Mr Sloane* and *What the Butler Saw*. The result is one of the best British films of the 1980s – shocking, hilarious and raw.

£6 (£5, £4)



www.buryfestival.co.uk

Monday 21 May

7.30PM

ST EDMUNDSBURY CATHEDRAL

The Sixteen

After 32 years of worldwide performance and recording, The Sixteen is recognised as one of the world's greatest ensembles. This concert is part of the *Choral Pilgrimage*, an annual tour of Britain's finest cathedrals, bringing music back to the buildings for which it was written.

Featuring arguably the three most celebrated composers from the Franco-Flemish school of the Renaissance, Josquin, Brumel and Lassus, this programme is centred around movements from the staggering 12-part *Missa et ecce terrae motus* by Brumel.

£23, £18, £13, £5 F



Box Office: 01284 758000

8.00PM APEX

Trio Libero



Saxophonist Andy Sheppard has just released his newest album, which introduces his new trio with Michel Benita and Sebastian Rochford. Rochford is one of the most in-demand drummers on the British jazz scene and is one of the young players changing perceptions of British jazz with bands Polar Bear and Acoustic Ladyland; Algiers-born French bassist Benita has played with the likes of Archie Shepp, Dewey Redman and Lee Konitz. Trio Libero represents a free-floating

and fascinating exchange between Sheppard's melodically and rhythmically inventive lines, Benita's melodic double-bass playing and the restlessly rhythmic drumming of Rochford.

'Enthralling in every delicate detail' – *Guardian*

£18, £5 F

www.buryfestival.co.uk

Tuesday 22 May

1.00PM

UNITARIAN MEETING HOUSE

Katona Twins



'The brilliant Katona Twins . . . Formidable virtuoso technique, their performances could hardly be bettered for charm, zest, wit and colouristic flair.'

Daily Telegraph

I don't really need to add anything to that except that their programme will include movements from Bizet's *Carmen* Suite, alongside music from Manuel de Falla, Albéniz, Bach and Boccherini.

£7, £5

Supported by the
Unitarian Trustees

5.30PM

ABBEYGATE PICTUREHOUSE

I'm Not There

(2007; 15)

An inspired journey into the life and times of Bob Dylan, *I'm Not There* features six actors portraying Dylan as a series of shifting personae, encompassing the public, the private and the fantastical. Starring Christian Bale, Cate Blanchett and Heath Ledger, this film is irreverent, playful and yet also deeply rooted in a knowledge of Dylan's biography. This is cinema at its most sublime.

£8 (£7, £6)



Box Office: 01284 758000

7.30PM APEX

Viktoria Mullova – Peasant Girl



Russian violinist Viktoria Mullova is renowned for virtuoso interpretations of the core classical repertoire both in concert and on disc. This evening she shows a different side to her artistic persona as she is joined by an all-star ensemble including her husband, cellist Matthew Barley, and jazz pianist Julian Joseph with a programme that shows the enormous influence of gypsy music on classical and jazz music in the 20th century. The programme ranges from duets for violin and cello by Bartók, an ode to Django Reinhardt by jazz composer

John Lewis and compositions by fusion band Weather Report. An unmissable evening with an extraordinary artist.

£23, £18, £5 F

Sponsored by *The Music Sales Group*



10.00PM

ST EDMUNDSBURY CATHEDRAL

Late Night in the Quire

The St Edmundsbury Consort performs a programme of music by Henry Purcell including 'O sing unto the Lord' and 'Thy word is a lantern'.

£6

www.buryfestival.co.uk

Wednesday 23 May

1.00PM APEX

Cellophony



Wagner	Prelude to <i>Tristan and Isolde</i>
Birchall	<i>Mirrors</i>
Schubert	Three Songs from <i>Schwanengesang</i>
Sollima	<i>Violoncelles, vibrez!</i>
Wieniawski	<i>Scherzo-Tarantella</i>

After 6 harps on Friday and 4 trombones on Monday, we now give you 8 cellos! Cellophony is the vibrant, sonorous and exhilarating sound of an octet of young professional cellists. They made their Wigmore Hall debut in December and their recital last year at London's Purcell Room met with universal critical acclaim.

'Dazzling' – *BBC Music Magazine*

£7, £5

Box Office: 01284 758000

5.30PM

ABBEYGATE PICTUREHOUSE

Lust for Life

(1956; PG)

Vincent Van Gogh (Kirk Douglas) is the archetypal tortured artistic genius, obsessed with painting and tortured by mental illness. He fails at being a preacher to coal miners. He fails in his relationships with women. He earns some respect among his fellow painters, especially Paul Gauguin, but he does not get along with them. He manages to sell only one painting in his lifetime. The one constant is his brother Theo, unwavering in his moral and financial support. A truly lavish biopic from the Golden Age of Hollywood.

£8 (£7, £6)



7.30PM APEX

John Williams & Richard Harvey



It is a great delight to be welcoming guitarist John Williams – regarded as a foremost ambassador of the guitar – back to the Festival. For this occasion he is joined by multi-instrumentalist Richard Harvey to take us on a world tour, performing world and historic music from Europe, Asia, Africa and the Americas from the 14th century through to the present day.

£23, £18, £5 F

7.30PM

ST EDMUNDSBURY CATHEDRAL

Suffolk Philharmonic Orchestra

Vaughan Williams

The Lark Ascending

Concerto grosso for string
orchestra (movements)

Elgar *Introduction and Allegro*
for strings

Britten *Serenade for Tenor, Horn
and Strings*

John Adams *Shaking and
Trembling*

It is not every day that a new professional symphony orchestra is born, but conductor Leslie Olive has arranged just that. Tonight's inaugural concert by the orchestra comprises music mainly for strings and features Thomas Gould (violin), Benjamin Hulett (tenor) and Martin Owen (French horn).

£34, £26, £21, £18, £12 F

Student ticket offer available –
call box office for details.

Thursday 24 May

1.00PM APEX

Piano 4 Hands



Mozart Sonata in F, kv 497
Debussy *Six Epigraphes antiques*
Roxburgh *Reflets dans la glace*
Ravel *La Valse*

Widely regarded as one of Britain's leading piano duos, this award-winning pair recognises Debussy's 150th anniversary. Roxburgh's work, written especially for this duo, is a tribute to Debussy and a reference to his *Reflets dans l'eau*.

£7, £5

1.00PM HUNTER CLUB

Jasper Smith Duo

Expert guitarist exuding sensitivity and swing on a gig packed with well-known tunes.

£6.50

Box Office: 01284 758000

5.30PM

ABBEYGATE PICTUREHOUSE

Ed Wood

(1994; 15)



Johnny Depp plays the maverick director Ed Wood (often cited as being the worst film director of all time), a charismatic, truly eccentric man with a fetish for angora sweaters and women's clothing in general. A strange, wonderful film from visionary director Tim Burton.

£8 (£7, £6)

7.30PM

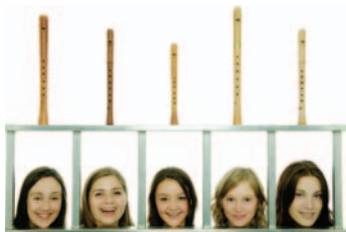
UNITARIAN MEETING HOUSE

Consortium 5

Graduates of the Royal Academy of Music, the members of Consortium 5 have gone on to establish themselves as one of the foremost recorder consorts of their generation. Winners of numerous awards and prizes, they are equally at home playing Renaissance music or working with composers to create new works for the ensemble and this concert will show just that with a programme that includes music by Byrd, Bach and Telemann as well as the world premiere of *From the four winds* by Ewan Campbell.

£14, £5 F

Supported by the
Unitarian Trustees



www.buryfestival.co.uk

8.00PM APEX

Imagined Village



The Imagined Village – one of the UK's most exciting bands – creates powerful music inspired by Britain's diverse cultural heritage. This amazing and flexible collection of musicians features greats from the folk world (Eliza Carthy, Martin Carthy and Jackie Oates) joined by the likes of Sheema Mukherjee (Trans Global Underground) on sitar, Andy Gangadeen (The Bays) on drums and Johnny Kalsi (Dhol Foundation) on percussion. This gig will feature a new work written for the Cultural Olympiad by Sheema Mukherjee and the whole evening will open with individual performances from some of the star villagers.

£18, £5 F

Thursday 24 May

8.00PM HUNTER CLUB

Songs of Bob Dylan with Barb Jungr



One of the most respected interpreters of contemporary song, Barb Jungr delivers intimate, virtuosic performances that leave her audiences and critics spellbound. Her two Dylan albums, *Every Grain of Sand* and *The Man in the Black Coat*, have received rave reviews. Joined by Simon Wallace on piano, she will give unforgettable examinations of such Dylan masterpieces as 'Like a Rolling Stone', 'The Times They Are A-Changin'' and 'Just Like A Woman'.

£15

Box Office: 01284 758000

10.00PM

ST EDMUNDSBURY CATHEDRAL

Late Night in the Quire

Dan Soper and James Thomas play works by J. S. Bach on the Cathedral's new organ.

£6



Friday 25 May

1.00PM APEX BAR

Dixie Ticklers



The Dixie Ticklers is one of the UK's most respected acoustic bands. As they revisit and transform classic New Orleans music, this hard-working band is building a fierce live reputation within jazz, the vintage scene and Europe's festival circuit.

£7, £5

5.30PM

ABBEYGATE PICTUREHOUSE

Capote

(2006; 15)

The creation of *In Cold Blood*, one of the most memorable books of the 1960s, and the impact the writing and research had on author Truman Capote are brilliantly explored in this fascinating insight into the creative process. Fascinated with the events surrounding a multiple murder in a small Kansas town, Capote decides to write about it. One of the finest character actors of his generation, Seymour Hoffman is superlative. The supporting cast is equally strong, especially Catherine Keener as the novelist and Capote's assistant Harper Lee.

£9.50 (£8.50 £7.50)



Friday 25 May

7.30PM APEX

Sinfonia Viva

For this award-winning orchestra's first visit to the Festival they will be joined by cellist Matthew Barley and dancer Bode Lawal who open the concert with an intriguing combination of solo cello and choreography set to a movement from a Bach Cello Suite. The Dvořák *Serenade* is followed by Pärt's wonderful *Fratres* and I am particularly looking forward to the new work by Tunde Jegede for solo cello, orchestra, African percussion and a solo contemporary African dancer.

Bach Cello Suite movement
Dvořák Serenade in D minor,
Op. 44

Pärt *Fratres*
Jegede *Invocation*

£18, £13, £5 F

ORCHESTRAS *Live*



Box Office: 01284 758000



8.00PM HUNTER CLUB

Nigel Price Organ Trio

The rising star of groove guitar leads a combo that blazes into the organ trio tradition with an exhilarating swing and fiery purpose. One of the best small jazz groups in the country, the Nigel Price Organ Trio's expertly blended brand of soul-bop sweeps you up and leaves you breathless. With Pete Whittaker on Hammond organ and Matt Home on drums.

£12 F

8.00PM ABBEY GARDENS

Gigs in the Gardens

Supported by **BBC**
SUFFOLK

Abba and Robbie Williams Tribute Night

'He's The One': the world's No. 1 Robbie Williams Tribute is packed with hit songs and delivered with all the trademark cheeky chappiness, showmanship and humour of Robbie himself, leaving the audience screaming for more. Magic of Abba have established themselves as one of the finest acts on the tribute circuit and pack their show with all the hits you know and love. Don't miss it.

£18, £5 (increases to £20 from 1 May, inc. reservations) **F**

Event entrance is in Mustow Street.

Gates open at 7.00pm.

No seating provided; no dogs, tables, barbecues or naked flames. No glass.



A co-promotion with
St Edmundsbury
Theatre Services

Sponsored by **EAST ANGLIAN**
DAILY TIMES



www.buryfestival.co.uk

Saturday 26 May

FROM 11.00AM

Bury Busk

Repeating the successful format from the last two years, the streets of Bury St Edmunds will once again be oozing music as local musicians busk in several locations around the town centre, this year raising money for the MS Society.

If you would like to take part visit www.buryfestival.co.uk for details on how you can get involved.



11.00AM APEX

Coffee Concert: Honeymead Ensemble

The Honeymead Ensemble is a group of successful and rising young musicians led by violinist Tamsin Waley-Cohen. For this concert of string quartets she is joined by Gemma Rosefield, Emma Parker and Sarah Jane Bradley.

- Haydn Quartet in B flat,
Op. 33 No. 1
- Janáček String Quartet No. 2
(*Intimate Letters*)
- Schubert Quartet in D minor,
D. 810 (*Death and
the Maiden*)

‘Tamsin Waley-Cohen, whose solo violin recital opened the Park Lane Group series, held us rapt with daring and undaunted performances’ – *The Times*

‘What a fine player’ – *Guardian*

£12, £5 (includes interval coffee) F

Box Office: 01284 758000

2.00PM AND 6.00PM
NOWTON PARK

Hansel & Gretel

Presented by London Touring Theatre



Come and join Hansel and Gretel in Nowton Park as they venture into the woods and outwit their stepmother and the hungry witch. Experience the adventure and cunning as LTT brings this classic tale to life in a fresh, exciting and magical way.

With instantly memorable new music written especially for this production; a wicked witch; an enchanted house made of delicious sweets and two young children on a voyage home: Hansel and Gretel is a brilliant way for the whole family to enjoy the thrill and charm of this classic tale.

£12.50 adult, £7 child,
Family ticket £35 F

4.00PM ST MARY'S CHURCH

African Sanctus

African Sanctus is an unorthodox setting of the Latin Mass harmonised with traditional African music recorded by David Fanshawe on his journeys up the River Nile (1969–73). The taped music from Egypt, Sudan, Uganda and Kenya is heard in counterpoint with live chorus, soprano soloist and band. A beefed-up Voice Squad led by Birgitta Kenyon will be performing this extraordinary work – as well as other African songs and music from Paul Simon's *Graceland* album.

£14, £9, £5 F



Saturday 26 May

5.30PM

ABBEYGATE PICTUREHOUSE

Shadowlands

(1993; U)



The tender story of the love affair between C. S. Lewis and the American poet Joy Gresham. She was one of the few people who challenged him emotionally and intellectually, giving him a completely new perspective on his life and forcing him to recognise his desires.

£9.50 (£8.50 £7.50)

7.30PM

ST EDMUNDSBURY CATHEDRAL

Happy & Glorious

Britten National Anthem

Rutter Magnificat

Walton *Orb and Sceptre*

Handel Coronation Anthems:

My Heart is Inditing

Zadok the Priest

Arne *Rule Britannia*

Parry *Blest Pair of Sirens*



Conducted by Philip Reed, the Bury Bach Choir is joined by the Prometheus Orchestra to celebrate the Queen's Diamond Jubilee with this uplifting programme of English music.

£23, £16, £14, £10 F

Box Office: 01284 758000

7.45PM HUNTER CLUB

Boo Hewerdine

One of the UK's most treasured singer-songwriters, in the '80s and '90s Boo fronted The Bible ('Honey Be Good', 'Graceland') and went on to write for Eddi Reader ('Patience Of Angels'), kd lang, Natalie Imbruglia and McAlmont. A charismatic, soulful performer, Boo Hewerdine is one of those rare artists who can leave your mind in a spin and your heart in your mouth.

£12

8.00PM APEX

Roberto Fonseca

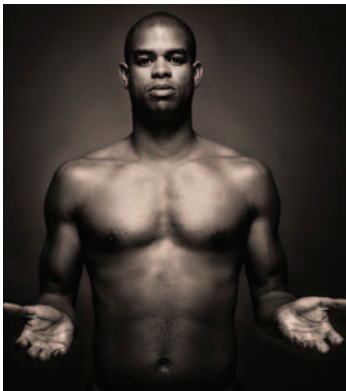
One of the most brilliant young jazz musicians to come out of Cuba, this Buena Vista Social Club prodigy has grabbed traditional Cuban music by the horns and drawn it, hot, stylish and sultry, into the 21st century. His new album, *YO*, looks back to his Caribbean roots while

striking forwards with red-hot grooves, electronic beats and sensuous lyricism that effortlessly updates Cuba's musical lineage.

'It's a heartbeat for contemporary Afro-Cuban life' – *The Times*

'A fabulously gifted pianist, composer and band leader with a gift for melody that outshines more celebrated peers . . . one of a new breed who can transcend musical boundaries through sheer quality' – *Guardian*

£16, £5 F



Sunday 27 May

10.30AM MEET AT THE
TOURIST INFORMATION CENTRE

Royal Links Walk

A 'villa regia' or royal town, since the time of Sigeberht in the seventh century, Bury St Edmunds has always had close links with the monarchy. The town lands were gifted to St Edmund by King Edward the Confessor and the boundaries have remained virtually unaltered ever since. Find out why the barons gathered at the Abbey to restrain King John with the Magna Carta and why Princess Mary Rose, sister of Henry VIII, is buried in St Mary's Church.

£8, £5 (includes coffee & a pastry) F

12.00PM APEX BAR

WSYJO

What better way to spend a Sunday afternoon than a couple of hours with the talented musicians that make up West Suffolk Youth Jazz Orchestra?

Free event

Box Office: 01284 758000

3.00PM APEX

Not So Silent Movies



This brainchild of cellist and composer Philip Sheppard sees top musicians perform spontaneous and improvised soundtracks to the world's greatest silent films. When I saw this last year the musicians were accompanying Charlie Chaplin, Harold Lloyd and Buster Keaton films – it was brilliant!

Philip explains: 'There will be no rehearsals. None of the musicians will have watched the films in advance. Improvisation before a live audience will begin as the film rolls . . . The atmosphere will be relaxed and there'll be room for some very sophisticated mucking about.'

£12, £5 F

Sponsored by *The Music Sales Group*



7.00PM
ABBEYGATE PICTUREHOUSE

Amadeus: Director's Cut

(1984; PG)

On his deathbed court composer Salieri confesses to having killed Mozart. Flashback to Mozart's arrival in Vienna: his brash and vulgar manner is the antithesis of his divine musical gift. Salieri cannot comprehend that God would grant such genius to this coarse boy. Mozart's success and genius drive Salieri into obsession with destroying his rival.

£9.50 (£8.50, £7.50)



7.00PM ST MARY'S CHURCH

St Mary's Choir

St Mary's Choir is joined by actors Jennifer Matter and Christopher Longman to take you on a journey through the Old Testament in voice and verse. Music ranges from Handel and Haydn through to Lloyd Webber and well-known Negro spirituals.

£8 F

8.00PM APEX

Fat Cat Comedy Special

The Fat Cat Comedy Club will be presenting a special guest for this year's Bury St Edmunds Festival.

Keep an eye on local press and on www.buryfestival.co.uk for details.



Sunday 27 May

8.00PM ABBEY GARDENS

Gigs in the Gardens

Supported by **BBC**
SUFFOLK

Clare Teal and the BBC Big Band



BBC Jazz Vocalist of the Year award-winner, Clare Teal, joins the internationally acclaimed BBC Big Band for a celebration of the legendary leading ladies of the big-band stage, including Ella Fitzgerald, Billie Holiday, Doris Day, Judy Garland, Peggy Lee and their contemporaries.

Enjoy the classic songs that made them stars, such as 'Fascinatin'

Box Office: 01284 758000

Rhythm', 'That Old Black Magic', 'Sentimental Journey', 'Somewhere over the Rainbow', 'The Folks Who Live on the Hill', 'The Trolley Song' and many, many more. Plus plenty of popular big-band hits from the groups that the divas loved to work with, including Artie Shaw, Count Basie and Benny Goodman. An evening of feel-good music inspired by the most glamorous women in Jazz!



£18, £5 (increases to **£20** from 1 May, inc. reservations) **F**

Event entrance is in Mustow Street.

Gates open at 7.00pm.

No seating provided; no dogs, tables, barbecues or naked flames. No glass.



*A co-promotion with
St Edmundsbury
Theatre Services*

BBC
RADIO SUFFOLK

95.5, 95.9 103.9 & 104.6 FM

Breakfast with Baxter

Wake up with Terry
Weekdays from 0600 - 0900



Exhibitions

Apex Gallery

Wednesday, 16 May –

Saturday, 28 July 10am–5pm daily

Festival



The Norwich Twenty Group of artists was formed in 1944 and now after over sixty years the membership has grown to more than seventy artists from all over Norfolk. Working in all aspects of the practice of contemporary fine art and having in recent years exhibited in Rouen, Novi Sad and Koblenz, we are delighted to have them travelling across another border to be with us exploring

Box Office: 01284 758000

the concept of 'Festival'. Original artwork will reflect the artists' personal responses to gatherings of people who celebrate music, performance, belief and common interests from the past to the present.

In the delightful setting of the apex gallery space you can view the stunning range of art over a coffee or something stronger!

Smiths Row Art Gallery

The Market Cross, Cornhill

01284 762081

www.smithsrow.org

12 May – 30 June

Tuesday–Saturday 10.30am–5.00pm

Powerhouse

To herald springtime and a season of sporting achievement, this exhibition explores themes of endurance, discipline, skill and flexibility. Expect to see works by artists who all share an interest and curiosity in the capacity of the human body – their work collectively playing with physical boundaries, expectations and interpretations of power.

Through contemporary art Powerhouse will also challenge the perceptions that exist about the capabilities of our own bodies and of assumptions made about conventionally valid and praise worthy physical achievement. This exhibition is inspired both by the anticipation of the Olympics 2012 and by personal journeys into the realms of physical discovery and exhilaration via conventional sport or creative expression through sustained movement.

Free admission



South Lookout, Aldeburgh

The Edmund Gallery

At St Edmundsbury Cathedral
Angel Hill

26 May – 7 June

Monday–Saturday 11am–6pm

Sunday 11am–4pm

Exhibition 1: Recent Works

Paintings by Tony Redman



Exhibition 2: Walt and Co.

Bury St Edmunds Summer
Exhibition – a mixed show
combining contemporary fine art
and dynamic visual objets d'art

Sponsors and Supporters 2012



Bury Free Press

EAST ANGLIAN
DAILY TIMES



SUFFOLK



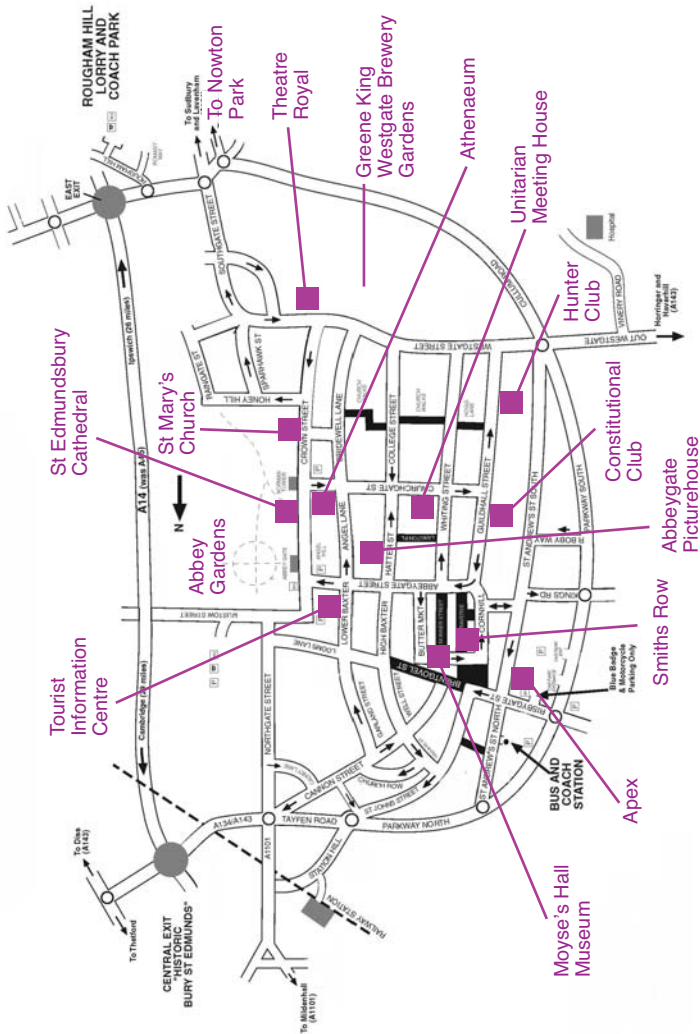
Acknowledgements

Concerts in St Edmundsbury Cathedral are given by kind permission of the Dean and Chapter. Concerts in St Mary's Church are given by kind permission of the Vicar and Churchwardens.

Brochure prepared by Agnesi Text, Hadleigh

Brochure printed by John Good

Box Office: 01284 758000



TOURIST INFORMATION CENTRE

ST EDMUNDSBURY CATHEDRAL

CENTRAL EXIT "HISTORIC BURY ST EDMUNDS"

ST MARY'S CHURCH

ABBAY GARDENS

TO NOWTON PARK

THEATRE ROYAL

GREENE KING WESTGATE BREWERY GARDENS

ATHENAEUM

UNITARIAN MEETING HOUSE

HUNTER CLUB

CONSTITUTIONAL CLUB

ABBAYGATE PICTUREHOUSE

SMITHS ROW

MOYSES'S HALL MUSEUM

BUS AND COACH STATION

APEX

ROUGHAM HILL LORRY AND COACH PARK

HOSPITAL

HARRINGER AND LORRY PARK (A143)

Blue Badges & Motorcycle Parking Only

To Diss (A143)

To Thetford

EAST EXIT

TO SUDBURY AND LOWHAM

To Diss (A143)

To Thetford

To Blakenhall (A1101)

MAIN STATION

TO WESTGATE

Booking Information

Unless otherwise stated, bookings for all events are being handled by the apex box office. We regret that tickets cannot be exchanged nor money refunded. Bury St Edmunds Festival reserves the right to change or cancel the advertised programme. Details are correct at the time of publication.

Special Offers

There are a number of special offers. All offers are limited and subject to availability. Discounts apply only to full-price tickets booked in advance and are not available with any other discounts and concessions.

Festival Friends

Join the Festival Friends and save money on a range of events. £2 off the cost of up to two tickets in top two price bands. Look out for events marked **F**. Phone 01284 758101 to join the Friends.

Lunchtime Special

Book for four lunchtime events and pay for only three.

£5 Tickets

£5 tickets are available where marked for anyone aged under 21 or under.

Group Bookings

Buy ten or more tickets for any event and save £1 per ticket.

Booking Dates

Festival Friends booking opens

Monday, 20 February

General booking opens

Monday, 27 February

Gigs in the Gardens booking opens

Monday, 13 February

Box Office

Festival Box Office

The Apex

1 Charter Square

Bury St Edmunds

Suffolk

IP33 3FD

Telephone 01284 758000

Email boxoffice@theapex.co.uk

Website www.buryfestival.co.uk

Box Office opening hours

Monday–Saturday, 10.00am – 5.00pm

Information

Latecomers will be admitted at the earliest suitable pause in the programme.



GREENE KING
BURY ST EDMUNDS

REAL BEER & FOOD

FESTIVAL

SATURDAY 19TH & SUNDAY 20TH MAY

~ 10AM TO 10PM ~

~ 10AM TO 5PM ~

Brewery Gardens, Westgate Street, Bury St Edmunds



*Celebrating the very
best in local food,
drink and music*

*New for 2012,
we are extending
the great local music
into the evening
(Saturday only)*



Tickets available from
GREENE KING
VISITOR CENTRE
01284 714297

APEX BOX OFFICE
01284 758000